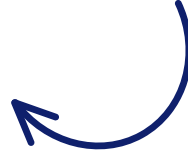


# THE LANDRY

## ELEVATIONS



### ELEVATION 1



### ELEVATION 2



### ELEVATION 3

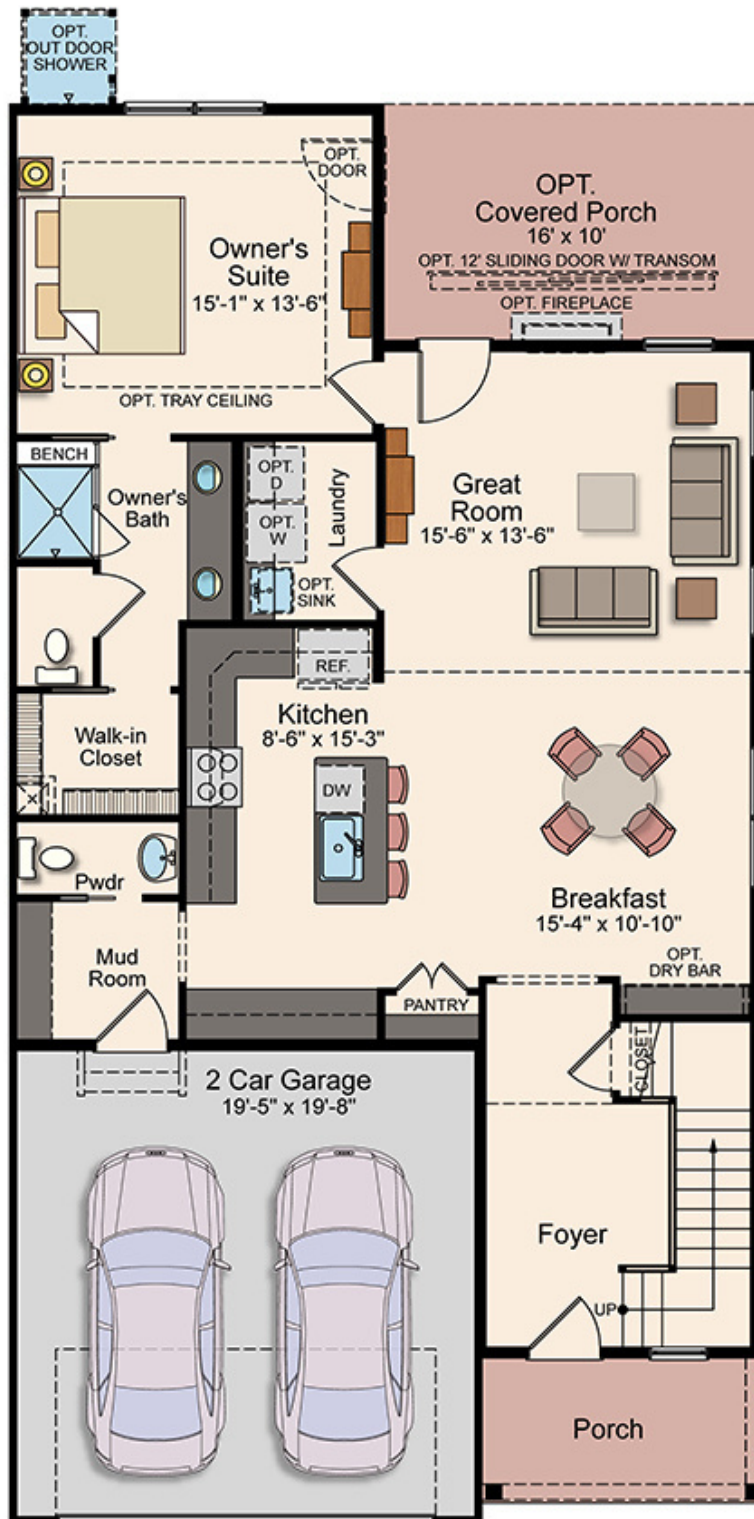
(Shown with optional black windows)



Approx. 2,370 - 2,736 sq. ft.  
3 - 4 Bedrooms, 2.5 - 4.5 Baths  
with a 2-Car Garage

# THE LANDRY

## FLOORPLANS

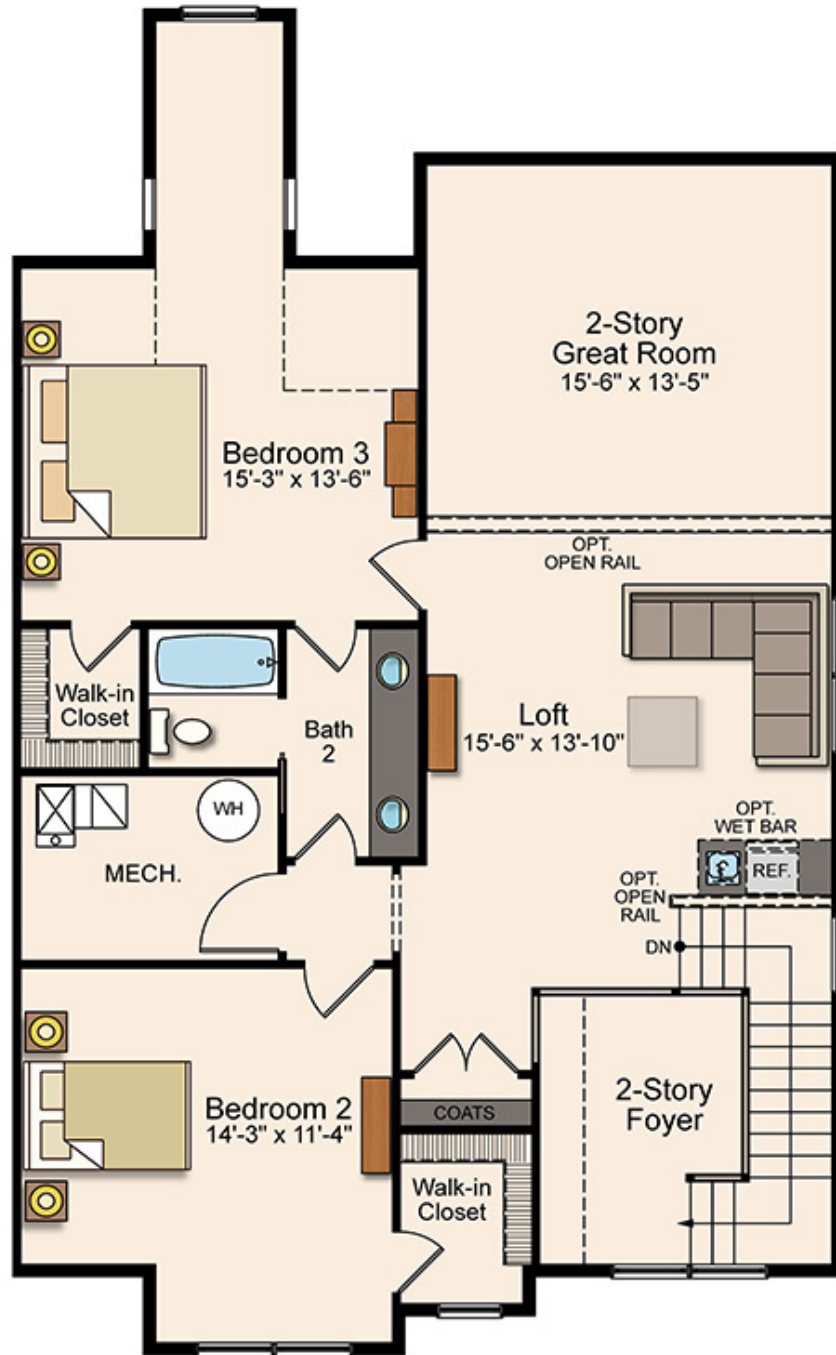


### FIRST FLOOR

Approx. 2,370 - 2,736 sq. ft.  
3 - 4 Bedrooms, 2.5 - 4.5 Baths  
with a 2-Car Garage

# THE LANDRY

## FLOORPLANS

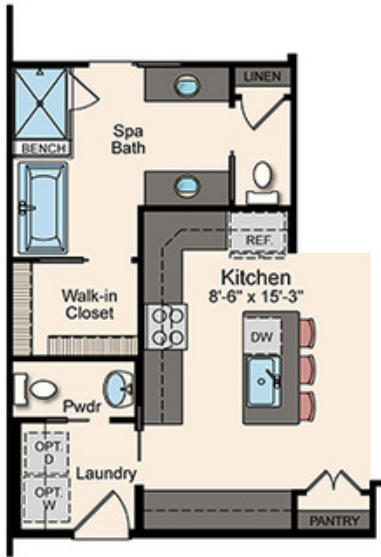


## SECOND FLOOR

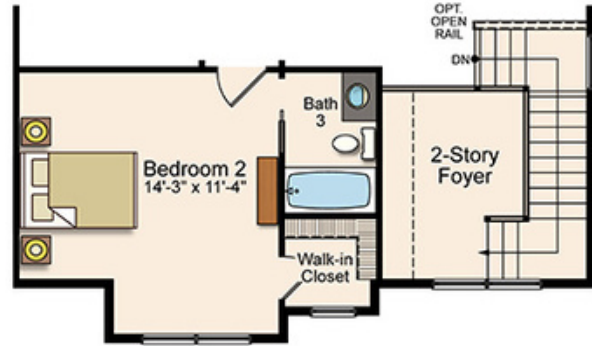
Approx. 2,370 - 2,736 sq. ft.  
3 - 4 Bedrooms, 2.5 - 4.5 Baths  
with a 2-Car Garage

# THE LANDRY

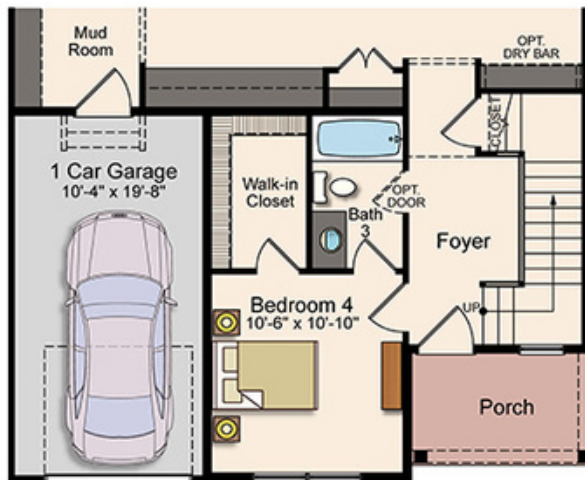
## FLOORPLANS



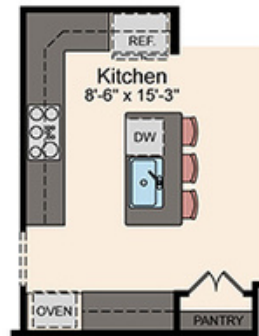
OPT. SPA BATH



OPT. BATH 3



OPT. BEDROOM 4



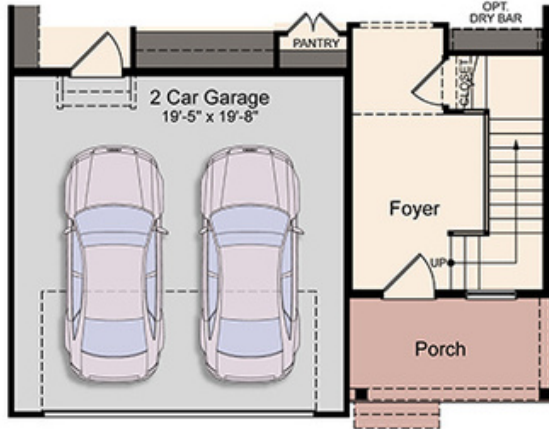
OPT. DESIGNER KITCHEN

## OPTIONS

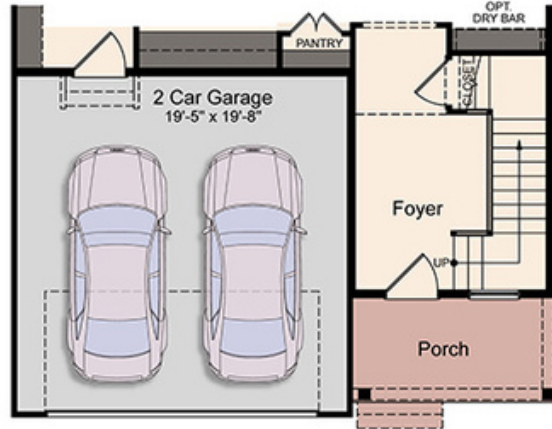
Approx. 2,370 - 2,736 sq. ft.  
3 - 4 Bedrooms, 2.5 - 4.5 Baths  
with a 2-Car Garage

# THE LANDRY

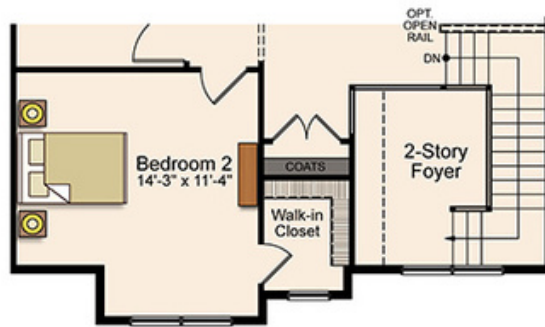
## FLOORPLANS



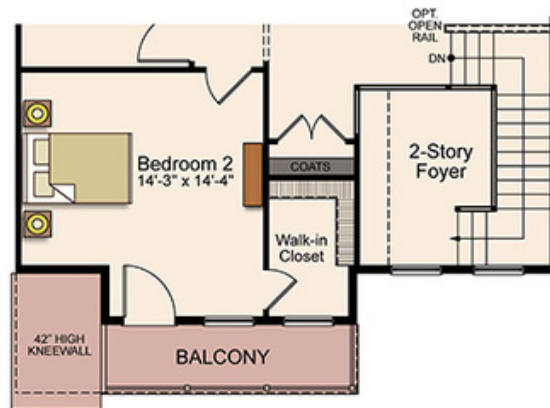
FIRST FLOOR  
ELEVATION 2



FIRST FLOOR  
ELEVATION 3



SECOND FLOOR  
ELEVATION 2



SECOND FLOOR  
ELEVATION 3

## OPTIONS

Approx. 2,370 - 2,736 sq. ft.  
3 - 4 Bedrooms, 2.5 - 4.5 Baths  
with a 2-Car Garage